



# Self-Inking Labelers



**MILLENNIUM MARKING COMPANY**

DEDICATED TO THE STAMP MANUFACTURER

# contact<sup>®</sup> Self-Inking Labelers for one-line labels

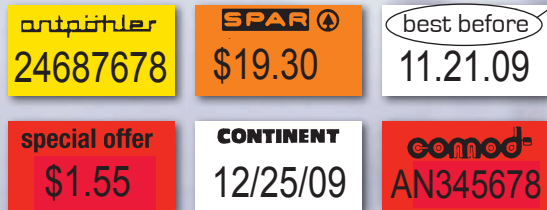
For Dating, Coding and Price Marking

Label size 18 x 12 mm



**Model 6.18\***  
6 characters

Label size 22 x 12 mm



Your custom message slug allows you to print custom labels.



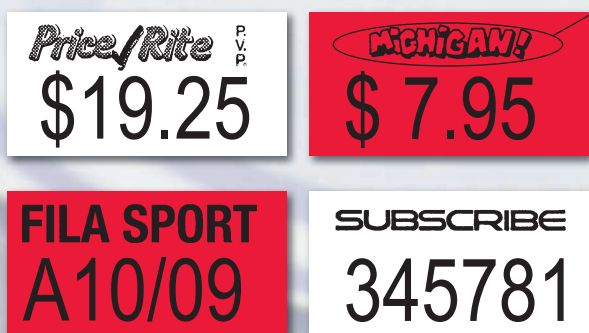
**Model 6.22, 7.22 & 8.22\***  
6 to 8 characters

Label size 25 x 16 mm



**Model 5.25**  
5 characters

Label size 37 x 19 mm



Your custom message slug allows you to print custom labels.



**Model 6.37\***  
6 characters

Label sizes available

18 x 12 mm

22 x 12 mm

22 x 16 mm

25 x 16 mm

37 x 19 mm

37 x 28 mm

Colors available

Red

Orange

Yellow

White

Green

\* optional printing plate to personalize your labels

# contact® Self-Inking Labeler for two-line labels

For Dating, Coding and Price Marking

## Model 66.22, 77.22 & 88.22

6, 7 or 8 characters



## Model 1212.37\*

12 characters on 2 lines



Your custom message slug allows you to print custom labels.

## Maxx Contact Labeler

This labeler prints giant messages on our 37x28mm label. There are no bands that print numbers...only a message slug that is interchangeable.



### Changing Maxx message slug



1. Open front door



2. Swing roller assembly down until it clicks into position

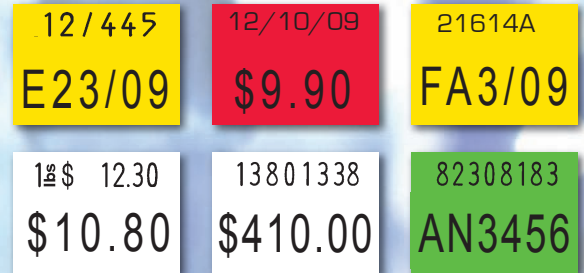


3. Remove message slug from magnetic housing, replace with new slug

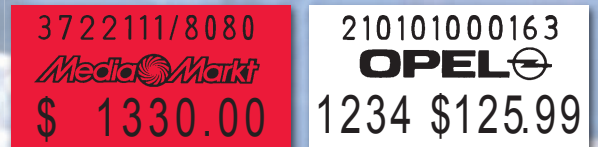
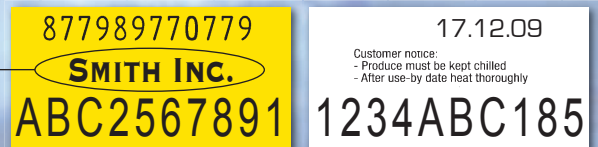


4. After closing front door, push release button to pop roller back in place

### Label size 22 x 16 mm



### Label size 37 x 19 mm



### Label size 37 x 28 mm



**INGREDIENTS:**  
TOMATO CONCENTRATE  
MADE FROM RED RIPE  
TOMATOES, DISTILLED  
VINEGAR, HIGH FRUCTOSE  
CORN SYRUP, SALT, SPICE,  
ONION POWDER, NATURAL  
FLAVORING



**It is important  
who develops your  
pictures  
SMITH PHOTOS  
BELLTOWN**

\* optional printing plate to personalize your labels

# contact® - Self-Inking Labelers

Optional printing plate allows you to personalize your labels.



## Print heads for flexible product labels

Whether labels need one or two lines of print, these compact printing heads make it possible to print up to 14 characters per line.

They allow for a combination of different figures and letters, as well as special characters and currencies.

## Single cast - solid, durable plastic housings

The solid, sturdy housings are surprisingly compact in construction. This not only serves to protect the internal label rolls, but also proves less fatiguing in use. Appliances are light and built ergonomically.

## Integrated inker system, providing consistent printing quality.

The ink roller has been adapted specially to enable precision printing of type, even at high speeds. It provides around 40-50,000 impressions and can be replaced with a few simple manual adjustments.

Full service repair department for \*Garvey® and Contact® Labelers.



## A creative solution for simple handling

Replacing label-rolls is child's play with our **contact** feeder unit. Simple and fast.



\*Garvey® is a registered trademark of Garvey® Products



MILLENNIUM  
MARKING  
COMPANY

DEDICATED TO THE  
STAMP MANUFACTURER